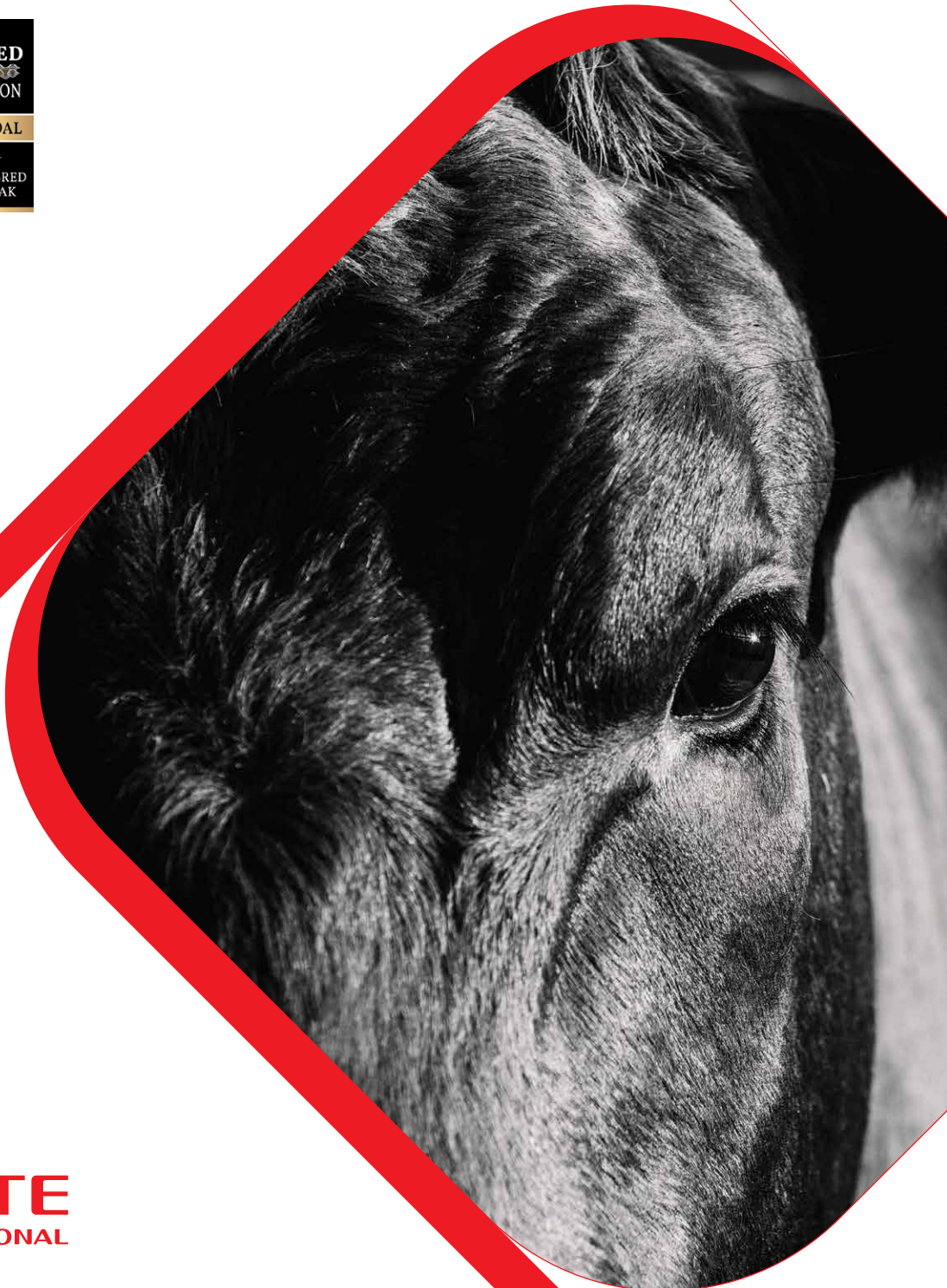


# Australia's Finest Wagyu by **LOTTE**

We create better life through beef  
supply chain management in Australia



**LOTTE**  
INTERNATIONAL

# LOTTE Group

---



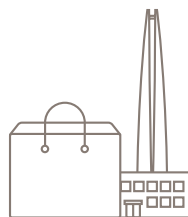
**LOTTE, a Lifetime Value Creator  
that enriches the lives of all**

## Business Portfolio

LOTTE continues to push further beyond and pursue innovation across the diverse areas of food, retail, tourism and chemicals to continuously offer the most up-to-date lifestyle for its customers. A life of greater convenience and delight paired with a flourishing future of shared growth for all. This is what awaits us in the future LOTTE aims to create.



**Chemical**



**Retail**



**Food**



**Hotel**



**Construction**



**Rental**

---

## Global Business

LOTTE Group is the fifth largest company in Korea with annual revenue of \$47 Billion USD. LOTTE is actively engaged in business in 30 countries, including in Asia, Europe and is expanding its operations throughout the Americas and in emerging economies.



## Contents

LOTTE Group	2
LOTTE International	4
Sandalwood Feedlot	6
L'grow Wagyu	8
Loin Cuts	10
Primal, Sub-primal Cuts	12
Contact Information	20

# LOTTE International

---



## **LOTTE International is a key company in LOTTE Group's food business**

Since its foundation in 1974, LOTTE International has developed its business model through continuous improvement and innovation. We maximize value to our customers by creating supply chains for various agricultural products. We work every day to provide consumers with high quality, safe and reliable food that they can enjoy with confidence.





## Livestock in Australia



We are the first Korean company in Australia that directly manages the entire beef production and distribution process. We are dedicated to providing our customers with safe and delicious beef. We are committed to build recognition and value of our beef brand, L'grow.

## Fishery



We import high quality seafood products from various regions such as Southeast Asia, South America, Canada, and Russia to markets around the world. Lotte International directly manages the farms and distribution process to provide safe seafood products that customers can consume with confidence.

## Grain grown in Korea



In order to provide the best rice to our customers, we directly manage the selection of raw materials, processing, packaging, and sales. We provide differentiated products such as convenient ready-washed rice.

## Grain grown in Russia



We operate a 24,000ha farm in the Russian Maritime Region. We produce non-GMO soybeans and corn to provide the highest quality grains to our customers.



# Sandalwood Feedlot



**SANDALWOOD**

**LOTTE International owns and operates 'Sandalwood',  
one of Australia's oldest and most awarded feedlots**

Sandalwood Feedlot was established in 1989 and holds 16,000 head of cattle. It is run in conjunction with a 1,514 hectare of grazing and farming operation. Sandalwood Feedlot is located on Queensland's Darling Downs.

## **Business**



Since LOTTE purchased Sandalwood in 2019, we have continued to improve our high-quality beef supply chain. In addition to building the quality and value of our beef brand L'grow, we also offer a range of custom feeding services. We work closely with customers to achieve their feeding performance, carcass quality and financial goals.



## ESG



We are committed to reduce our impact on the environment, environmental protection and conservation of our natural resources for the benefit of current and future generations. We have implemented strategies to increase renewable energy usage and reduce methane gas emission through innovative feed additives.

## Nutrition



We work with consulting nutritionists to ensure we meet the needs of our cattle and carefully adjust their feed to match their stage of growth. We use barley as the primary feed ingredient, together with wheat, protein meal, and high quality hay.

## Animal Welfare



The facilities at Sandalwood Feedlot have been designed with animal comfort in mind. Every pen in the feedlot is under shade and has separate water and feed troughs. Cattle are monitored daily by our staff. We operate a hospital complex that is fully equipped for cattle treatment, and provides a low stress environment for recovery.

## Investment



We continue to make investments to strengthen our beef supply chain in Australia. These investments include Wagyu genetics, feed production facilities, water resources, and cattle facilities and innovative IT projects.



# L'grow Wagyu



## Australian Wagyu raised by LOTTE

Wagyu is a breed of cattle that originated in Japan. It is recognized as the best beef in the world and called 'legendary beef' or the 'caviar of beef'. L'grow is our premium Wagyu beef brand and is your guarantee that production has been entirely managed by LOTTE. L'grow is amongst the finest beef in the world and provides an unforgettable dining experience.





## Genetics



Wagyu quality is determined by Genetics and Management. We work with a network of the best cattle breeders in Australia. Our cattle supply is managed by our Livestock Supply Chain Manager who is Australia's most experienced cattle buyer. We select cattle with the best genetics based on established production results.

## Synergy of Australian and Korean



Korea produces some of the best beef in the world from the Korean native Hanwoo cattle and the production management of these cattle has been continually improving for many generations. Our feeding process is unique and differentiates our brand and product through the collaboration of world class nutritionists from both Australia and Korea. The diet of our cattle is divided into three stages - backgrounding, growing and finishing. We carefully match the feed we provide to the cattle to meet their nutritional requirements and maximise their health and quality of beef.

## Customized Beef specification



To meet the needs of our customers, we customize our Wagyu beef cut specifications. Our beef Production Manager rigorously manages these specifications at our partner processing facilities.

## Farm to Table with L'grow



We deliver the best beef to customers around the world through integrated beef supply chain management from farms to customer tables. We supply L'grow Wagyu to LOTTE stores in Korea, and customers in Australia, Vietnam, Singapore, Hong Kong, and the UAE.

# Loin Cuts

## Cube Roll

### THE UNDOUBTEDLY MOST HIGH-PRIZED CUT

Cube roll is located between the chuck and the striploin over the back of the cattle. It is the undoubtedly the most high-prized cut, known for its tenderness and great flavour.



## Oyster Blade

### INTENSE MARBLING - THE BUTCHER'S SECRET

Oyster blade lies just below the shoulder blade, and is famous for intense marbling with a rich buttery taste. It can be prepared in a number of ways, such as cutting into steaks, sliced for stir-fries or cooked slow as a whole piece.







## Striploin

### IDEAL PIECE FOR EVERY DISH

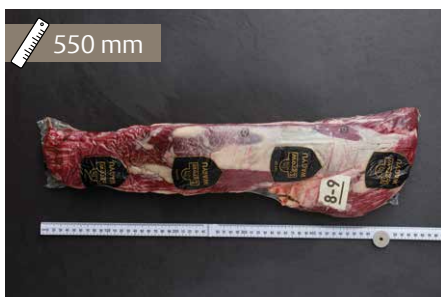
Striploin is a boneless cut from the short loin that is renowned as one of the most premium steaks. It is known for its balance of satisfying flavour and tenderness.



## Tenderloin

### THE MOST TENDER CUT

Tenderloin is one of the most tender cuts of beef and is located within the loin. It is recommended to be roasted and served whole or cut into individual steaks.



# Primal, Sub-primal Cuts

## Bolar Blade



## Chuck Eye Roll



## Chuck Rib Meat



## Chuck Tail Flap







## Chuck Tender



## Deckle



## Eye Round



## Flank Steak



# Primal, Sub-primal Cuts

## Flap Meat



## Heel Muscle (Shin Shank B)



## Inside Skirt



## Karubi Plate







## Knuckle



## Neck Chain



## Neck Meat



## Outside Flat



# Primal, Sub-primal Cuts

## PE Brisket



## Rib Cap Meat



## Rib Fingers



## Rostbiff







## Rump Cap



## Shin Shank A



## Shin Shank C



## Shin Shank D



# Primal, Sub-primal Cuts

## Shin Shank E & F



## Short Rib Meat



## Topside Cap Off



## Tri Tip





F1-FB WAGYU  
MIN. 400+ DAYS  
GRAIN FED

AUSMEAT  
MARBLE  
SCORE 3-9+

NO ADDED  
HORMONES

HALAL  
ACCREDITED



## LOTTE International

**A** 302, Yeongdong-daero, Gangnam-gu, Seoul  
**P** + (82) 2 3459 9628 **E** [hyunki.kim@lotte.net](mailto:hyunki.kim@lotte.net)  
**W** [www.lotteintl.com/en](http://www.lotteintl.com/en)

## Sandalwood Feedlot

**A** 201 Sandalwood Road, Irvingdale QLD 4405  
**P** + (61) 7 4663 7739 **E** [admin@sandalwood.au](mailto:admin@sandalwood.au)  
**W** [www.sandalwood.au](http://www.sandalwood.au)

## L'grow Wagyu

**A** Se 2 Level 3, 340 Adelaide Street, Brisbane QLD 4000  
**P** + (61) 7 4663 7739 **E** [meatsales@lotte.net](mailto:meatsales@lotte.net)  
**W** [www.sandalwood.au](http://www.sandalwood.au)

